

# THE ARCHITECTS NEWSPAPER BLOG

---

New at NeoCon

[Midwest](#) | 6.10.10 | [Jennifer K. Gorsche](#)

We'll see you in Chicago at the show—while you're there, remember to pick up a copy of our [latest Midwest edition](#), hot off the press! Until then, we offer you a sneak peek of our favorite finds from this year's [contract furnishings market](#):



## **Bram Boo Bench, [VanerumStelter](#)**

Belgian designer Bram Boo's bench fosters socialization, rest, and work all in one piece of furniture. Four seats arranged in a square create four desktops and multiple ways to face others. The bench is available in red and black.

---



**Dama Coffee Table, [CR&S Poliform](#)**

The Dama Coffee Table by CR&S adapts to a range of room configurations and styles. The seamless, solid-wood table is approximately 13 by 18 inches and is available in canaletto walnut and cedarwood finishes.

---

**Seek, [Allsteel](#)**

Allsteel's Seek lightweight chair has three storage configurations, allowing it to be stacked and nested without racks or trolleys. Available in eight colors with optional arms and a cushioned seat, a flexing back and ergonomic design make it a more comfortable folding chair, and a healthier one, too. Seek is expected to qualify for SCS Indoor Advantage Gold certification for air quality.

---

**Lyra Collection, [KI](#)**

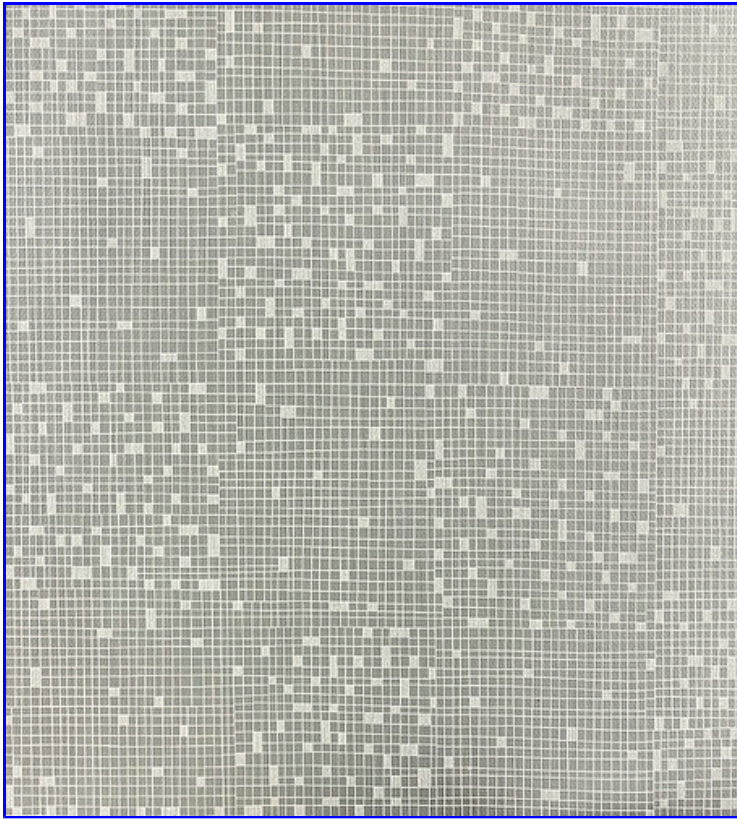
The Lyra collection from KI aims to fill a gap between formal and informal furniture. Bases are available in wood or steel, along with several upholstery combinations, allowing the lounge chairs, loveseats, and tables to adapt to modern or traditional environments.

---

**Curio Table, [Bernhardt Design](#)**

Designed by Claudia and Harry Washington for Bernhardt Design, the Curio table is available in bright or muted lacquered colors, but also in a range of natural wood finishes for a more reserved look. The beveled top is available in 19-, 22-, and 42-inch diameters and is sturdy enough to accommodate a glass or Corian surface for high-traffic areas.

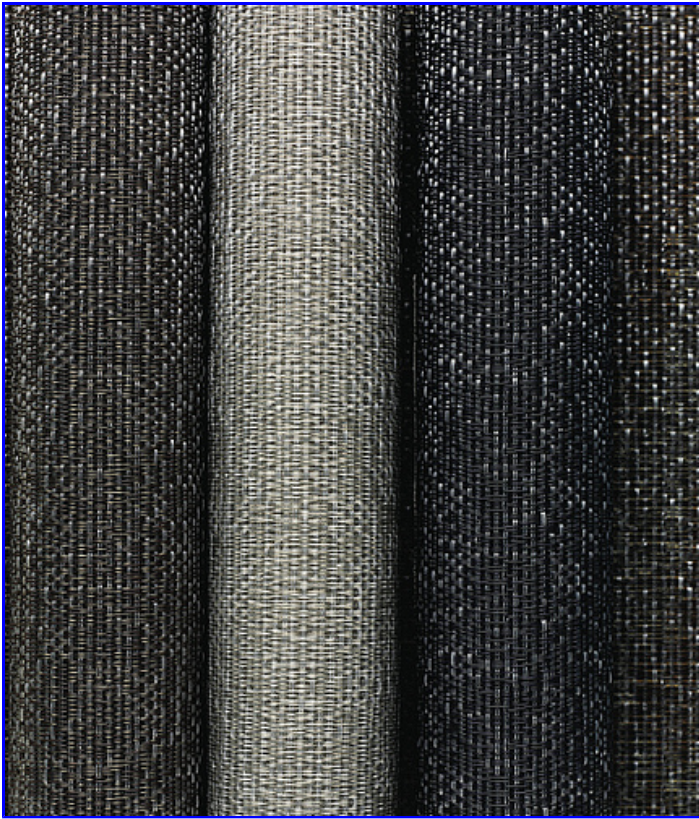
---



### Urban Metallics, [Carnegie](#)

The Urban Metallics collection is Carnegie's newest addition to its Surface IQ wall-covering line of PVC-free surfaces that use only water-based inks and coatings, but still have high abrasion resistance and tolerance for bleach-based cleaners. The line includes a variety of metallic patterns and scales (Midas is pictured), each of which are Cradle to Cradle Silver certified.

---



**Frost, [Chilewich Contract](#)**

Frost is an industrially-derived surface available in three shimmering shades, Black, Topaz, and Mineral, with a transparent fiber coating that changes the surface's appearance depending on lighting direction. With the appropriate backing material, Frost can be used in a variety of ways including as wall-to-wall and tile flooring, floor mats, wall covering, and upholstery fabric.

---

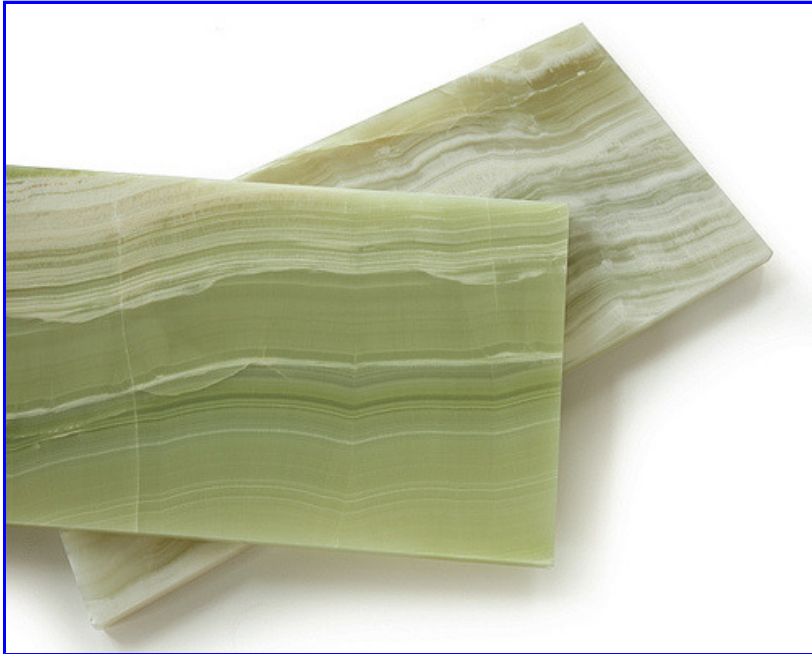


**Rodarte Textiles, [Knoll Luxe](#)**

Knoll's luxury fabric division collaborated with fashion house Rodarte to create five upholstery and three drapery patterns named

after poets and inspired by the fashion house's runway collections. Auden (pictured) is an ombre pattern printed digitally on woven raffia and is available in four colorways.

---



**Vein Cut Onyx, [Stone Source](#)**

Vein Cut Onyx from Stone Source is available in white or green, each with natural vein patterns and translucency. The 2-centimeter-thick slabs can be used for interior walls and counters, but are not recommended for kitchen countertops.

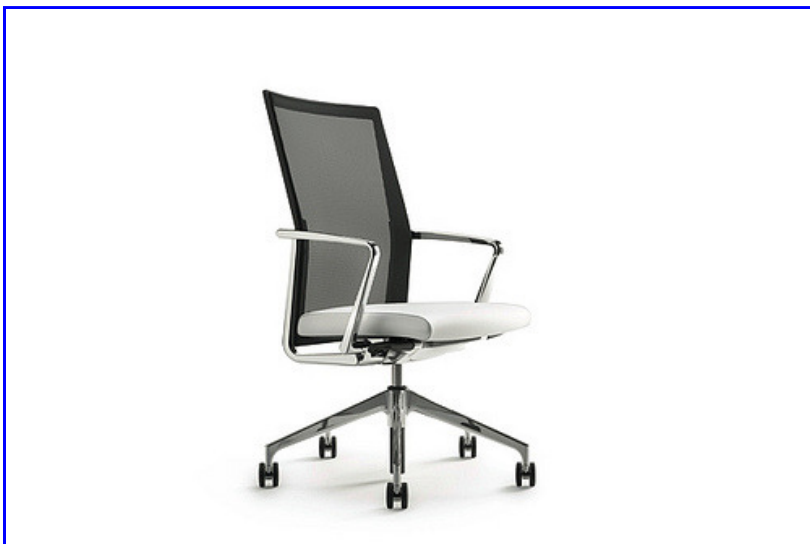
---



**Enea Lottus Table, [Coalesse](#)**

Designed by Barcelona-based design trio Lievore Altherr Molina for Enea of Spain, Lottus tables are available in the full range of Coalesse veneer and laminate colors, with four complementary colors for the painted metal base. Four heights and diameters from 30 to 72 inches allow the table to fit a range of spaces and match several seating options, including Lottus chairs and stools.

---



**Sava, [Stylex](#)**

Sava Cvek's new design for Stylex is a multitask chair that combines engineering and aesthetics to create a versatile design. The chair is available with task or conference arms with a high or mid-back design with mesh or upholstered finishes and low-profile paddles to control height, tension, seat depth, and tilt.

**DR Desk, [Jofco](#)**

Claudio Bellini's DR desk design for Italian manufacturer Frezza combines a simple table with a carefully designed desk and storage element. The desk's legs are carved entirely from solid walnut wood, creating a striking contrast to optional glasswork surfaces and painted drawers.

**Flow Bench, [Arktura](#)**

Designed by LA-based Chris Kabatsi, the Flow Bench from Arktura is formed from eco-composite materials that are suitable for residential and commercial interiors. Available in orange, black, and white, the bench is 72 inches long, and next year will be joined by Kabatsi's similarly fluid Squall coffee table.



**FCB Series, [Sedia Systems](#)**

Herzog and de Meuron designed Sedia Systems' FCB Series of stadium seats as a flexible option for arenas, auditoriums, and classrooms. The line includes fixed shell or gravity uplift seats and four upholstered VIP seats, with optional flip-up desk system and a slender profile designed to maximize aisle space.

Tags: [Allsteel](#), [Arktura](#), [Bernhardt Design](#), [Carnegie](#), [Chilewich](#), [Coalesse](#), [Jofco](#), [KI](#), [Knoll](#), [NeoCon](#), [Poliform](#), [Sedia Systems](#), [Stone Source](#), [Stylex](#), [VanerumStelter](#)

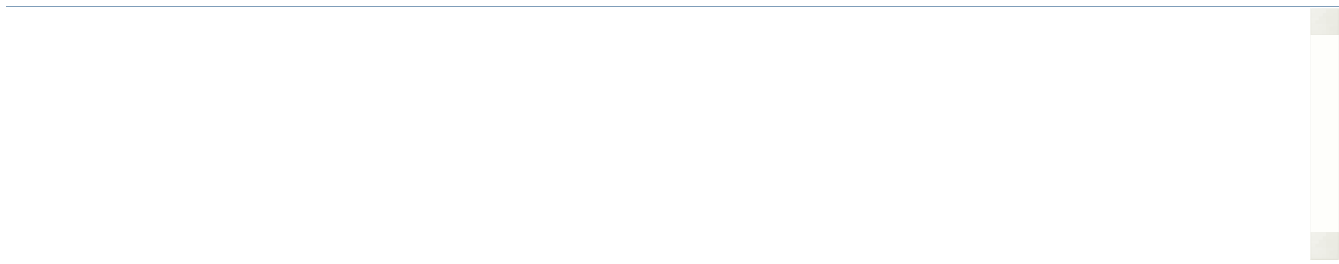


Post new comment

Name (required)

E-Mail (required)

Security Code:



• Search for:

• [A/N News Feed](#)